



STREAM C

# From data to decision – the role of KM and Communication in Evidence-based decision-making

Cristian Crespo  
CLEAR LAC Executive Director

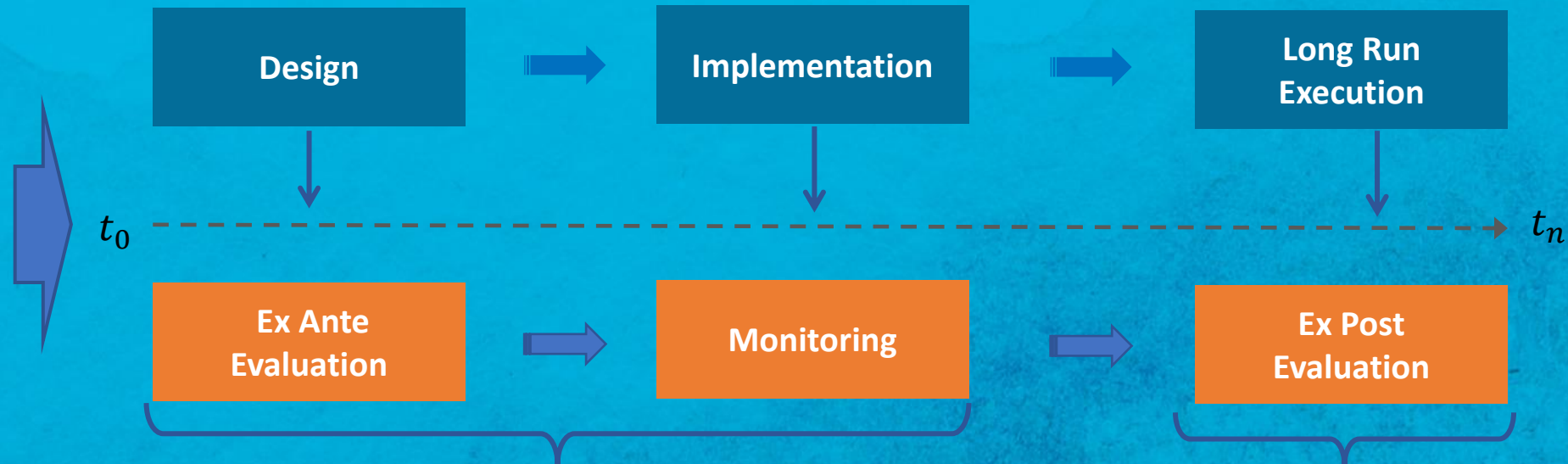


**NEC** | NATIONAL EVALUATION  
**2024** | CAPACITIES CONFERENCE  
全球国家评估能力会议





# The Monitoring and Evaluation System in Chile



Responsible entities:

- Undersecretary of Social Evaluation & Budget Office

Responsible entity:

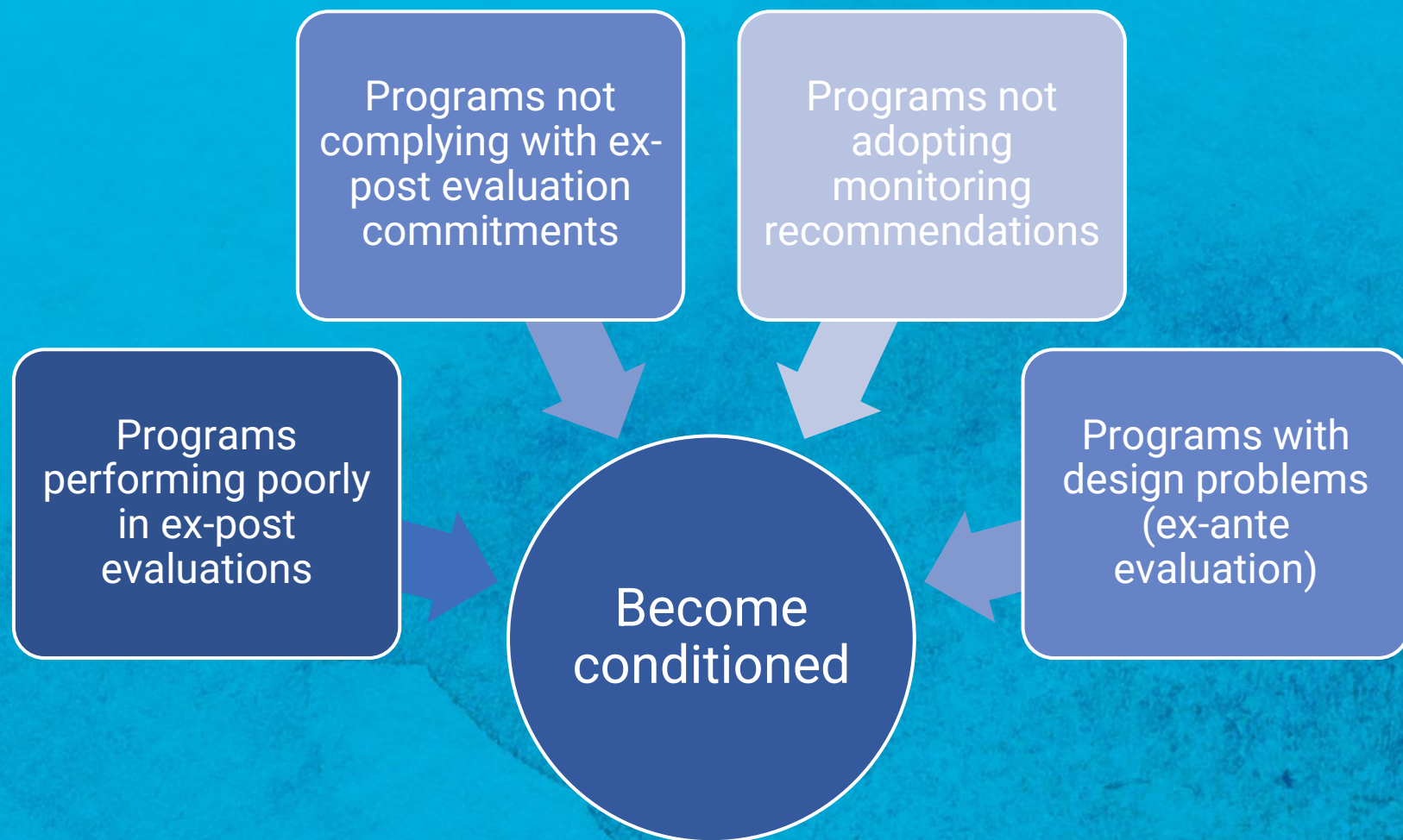
- Budget Office

An integrated M&E system: For example, findings of monitoring or ex-post evaluation can lead to reassessing the design (and ex-ante evaluation).

# Connection with Budgeting Decision-Making

The results of the M&E system inform the budgeting process.

How?







NEC  
2024

NATIONAL EVALUATION  
CAPACITIES CONFERENCE

全球国家评估能力会议

AT THE BEGINNING OF THE BUDGETING PROCESS, THE FINANCE MINISTRY COMMUNICATES TO EACH SECTOR THE INSIGHTS OF THE M&E SYSTEM, INDICATING THE PROGRAMS THAT ARE CONDITIONED

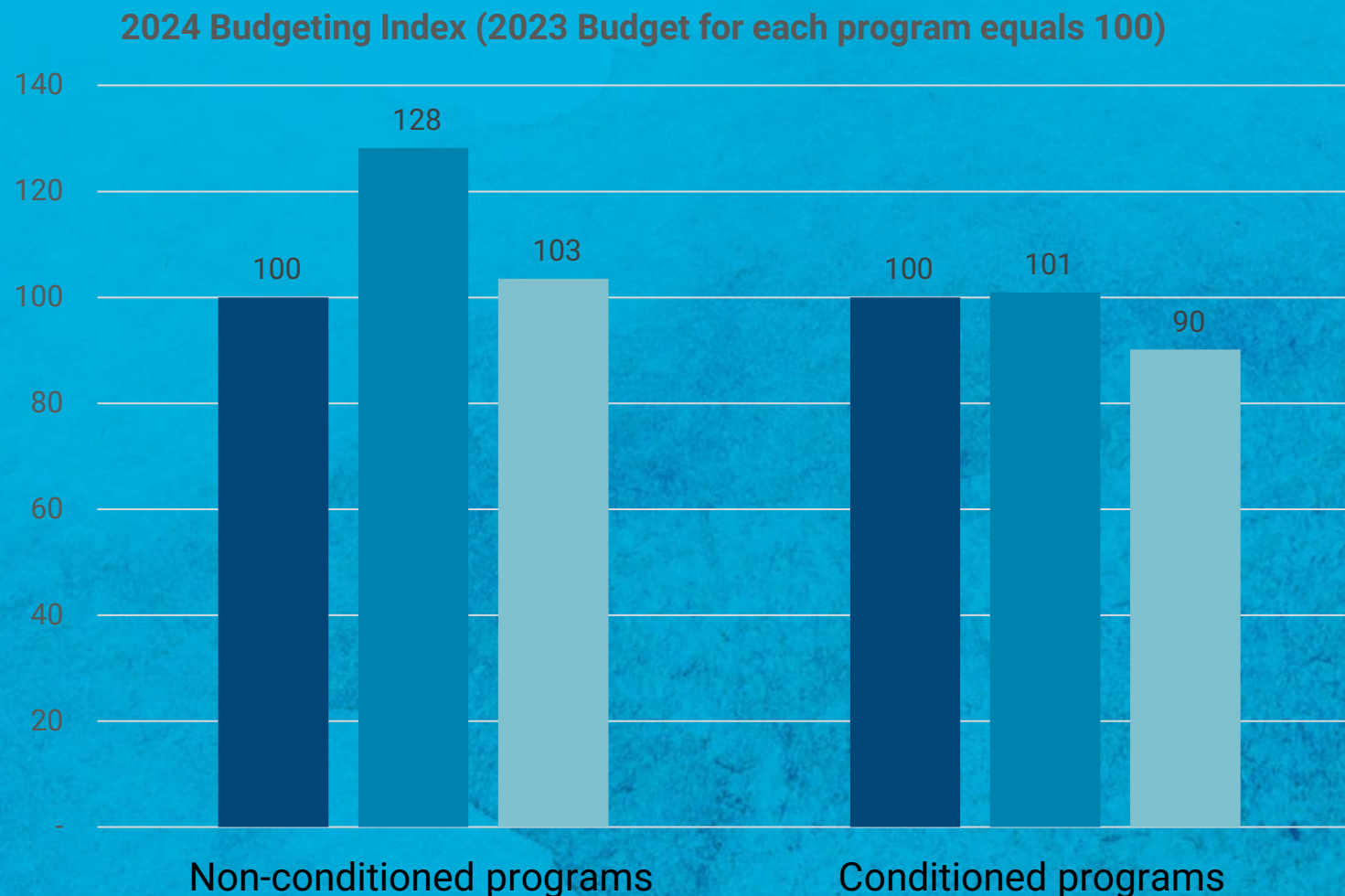
**DOES THIS MAKE A  
DIFFERENCE FOR  
DECISION-MAKING?**





# INCIDENCE IN BUDGETING DECISIONS

- 27 point difference in resources requested by the own sectors (between conditioned and non-conditioned programs).
- +3% resources assigned for programs with good evaluations or non-conditioned.
- -10% resources assigned for conditioned programs.







NEC  
2024

NATIONAL EVALUATION  
CAPACITIES CONFERENCE

全球国家评估能力会议

# KEY TAKEAWAYS?

INTEGRATE M&E SYSTEMS KNOWLEDGE WITH RELEVANT PROCESSES

SIGNALING: THIS KNOWLEDGE MATTERS

COMMUNICATE PROPERLY AND FORMALLY

