



Knowledge Brokers

[www.knowledgebrokers.edu](http://www.knowledgebrokers.edu.pl)
pl

CHALLENGE

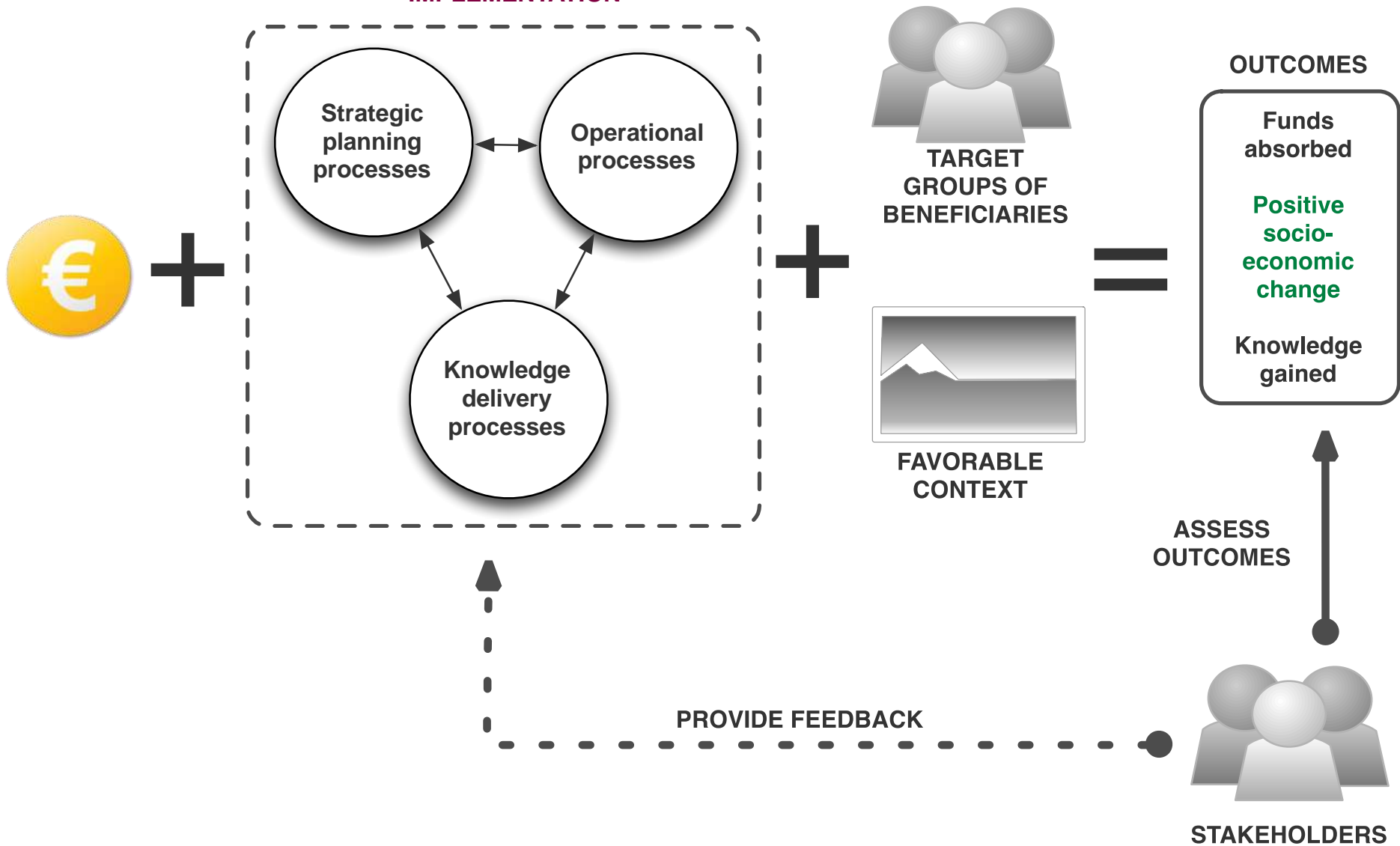
MISSION OF PUBLIC INTERVENTIONS

- 1. Create favorable environment for development**
2. Deliver the services that fulfill needs of the citizens
3. Guide citizens towards socially desirable behaviors

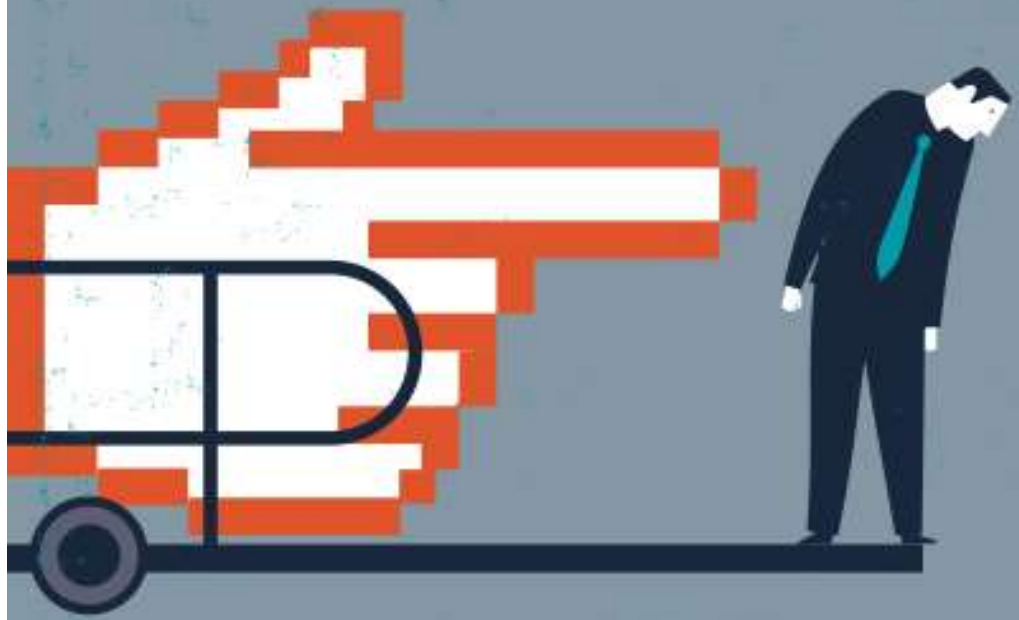


What works?
For Whom?
In what context?

THE SYSTEM OF IMPLEMENTATION

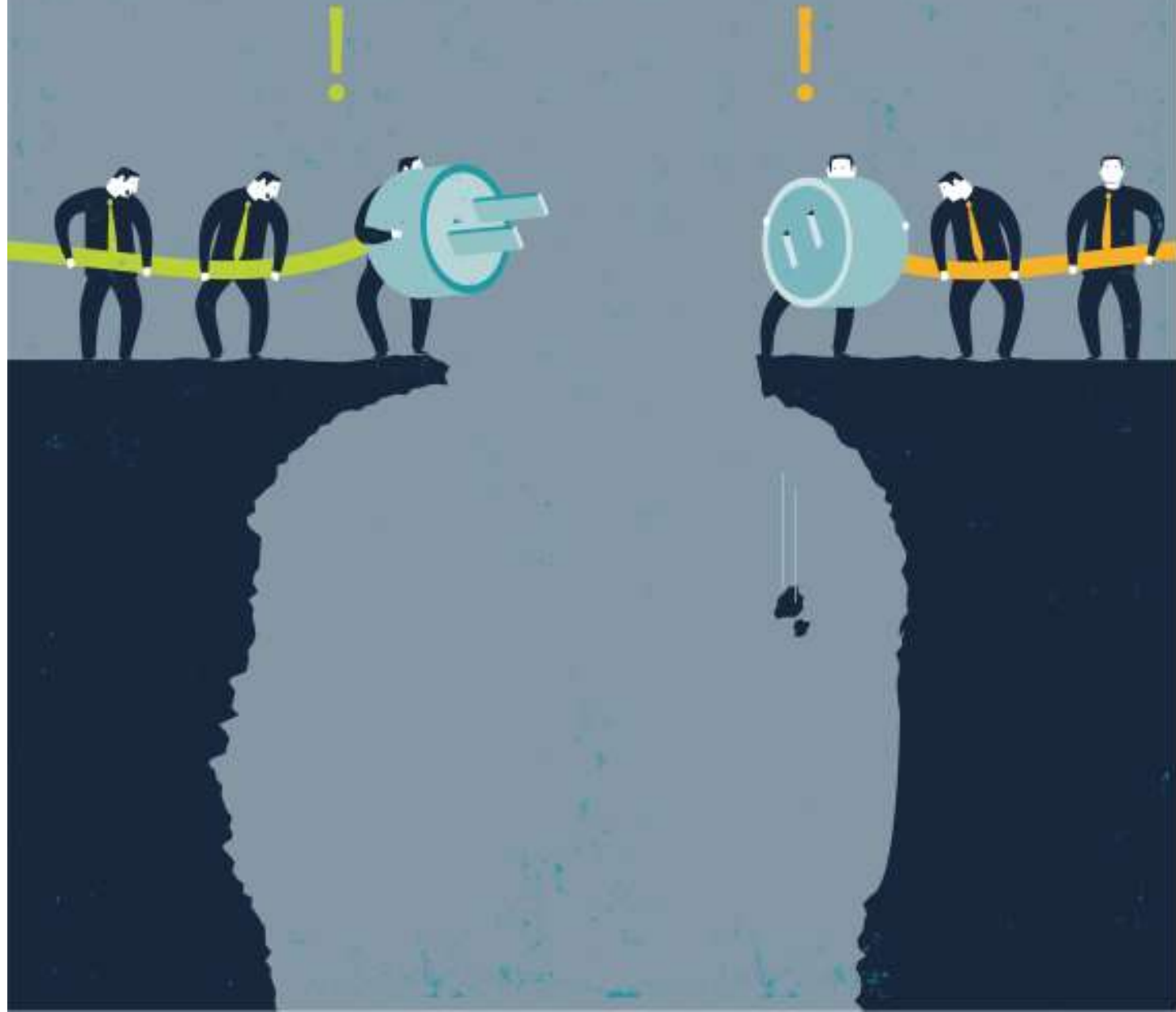


Data Overload



010010100110100101001010011010010100101001 101001010010100110100101001010011010010100101001101001010
10011010010100101001 1010010100101001 1010010100101001 1010010100101001 1010010100101001 101001010010100
100101001010011010010100101001 1010010100101001 1010010100101001 1010010100101001 1010010100101001 10100
00101001 1010010100101001 1010010100101001 1010010100101001 1010010100101001 1010010100101001 10100101001
0110100101001010011010010100101001 1010010100101001 1010010100101001 1010010100101001 1010010100101001 1
010100101001 1010010100101001 1010010100101001 1010010100101001 1010010100101001 1010010100101001 1010010
1010011010010100101001 1010010100101001 1010010100101001 1010010100101001 1010010100101001 1010010100101

Know-Do Gap

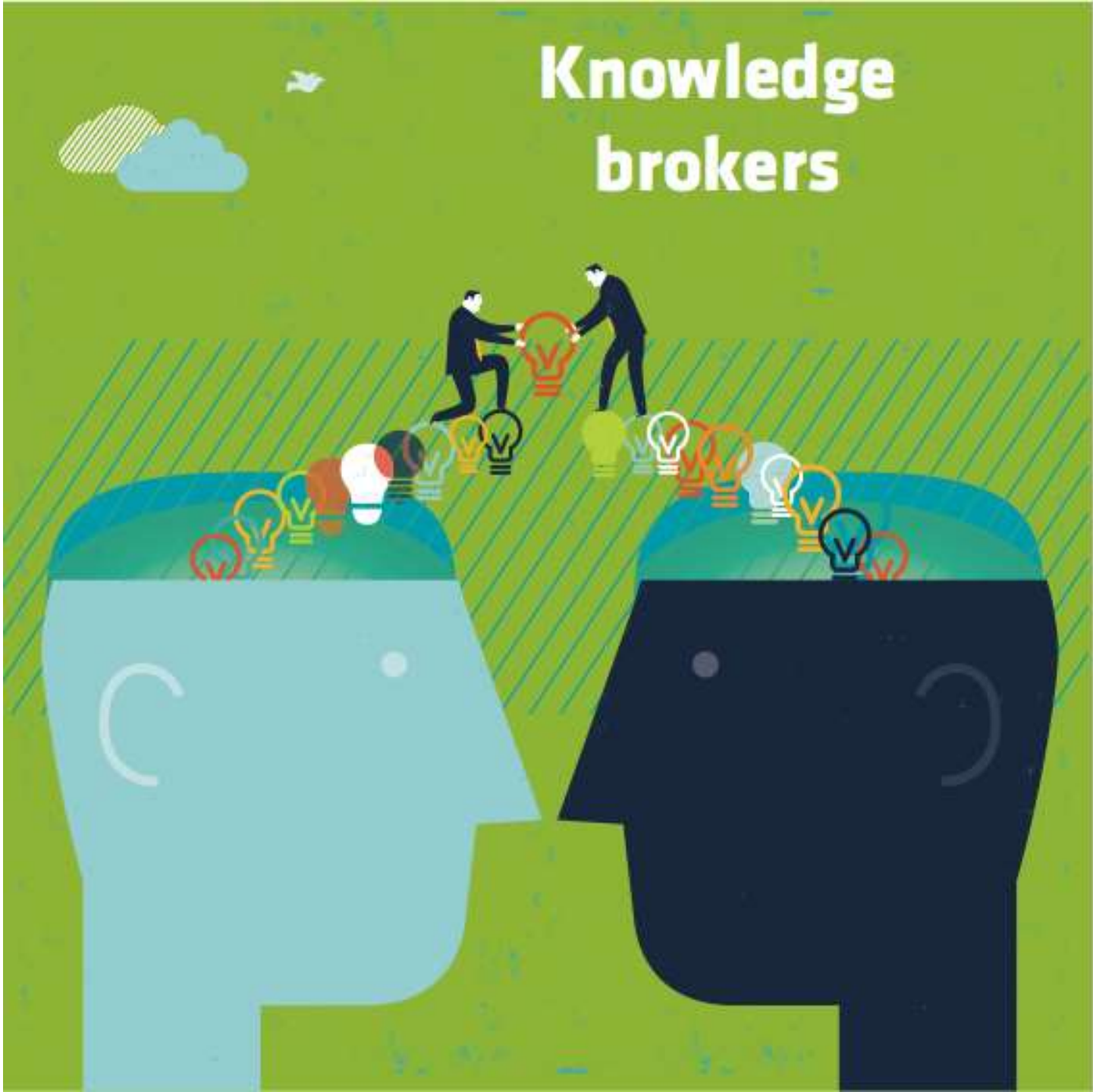


Knowledge fragmentation



SOLUTION

Knowledge brokers



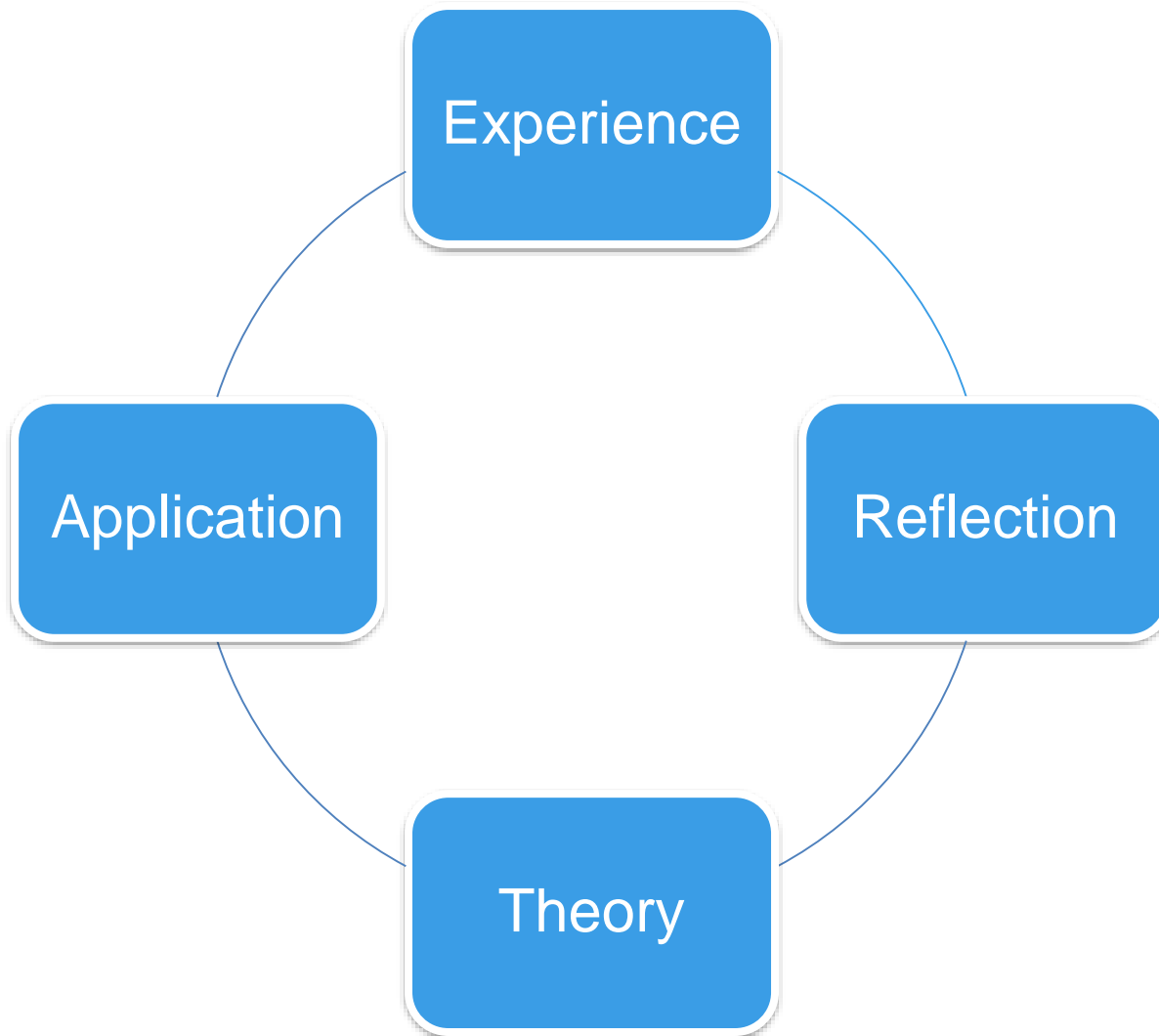
ACTIVITIES of BROKERS

1. Identifying knowledge needs of users
2. Acquiring credible knowledge
3. Feeding knowledge to users
4. Accumulating knowledge over time
5. Building networks with producers and users of knowledge
6. Promoting evidence-based culture
7. Managing time and resources

How to learn those skills in practice BUT without bearing the costs of mistakes that are part of the learning process?

LEARNING

LEARNING CYCLE



GAME

GAME in a NUTSHELL

- You manage an evaluation unit in a region for twelve months.
- During that time, four different public interventions are implemented in your region.
- At different stages of those interventions, different decision-makers express different knowledge needs.

Your mission is to provide credible knowledge, to the key user, on the right moment and in an accessible way.