



**LEAVING NO
ONE BEHIND:
EVALUATION
for 2030**

2019 National Evaluation
Capacities Conference

**Strengthening Sub-national
Governments' role in Evaluation of
the SDGs in Kenya.**

Council of Governors

By Ken Oluoch

 [@undp_evaluation](https://twitter.com/undp_evaluation)

[#NECdev](https://twitter.com/NECdev)

Presentation outline

- Legal framework for M&E.
- Institutional Framework for SDGs.
- Plans and strategies for M&E.
- Framework for SDGs mainstreaming.
- Key milestones, challenges and way forward.



Partners

County Governments of Kenya through the Council of Governors have partnered with the following:

- DFID –KDSP Project
 - World Bank, USAID-AHADI, UNDP, UN Women.
- UNDP Devolution Project – Governments of Sweden, Norway, USAID.
- GIZ
- WFP
- FAO
- UNICEF
- European Union (EU)
- Private Sector, CSOs, Academia, Media, Philanthropy and Foundations

Introduction

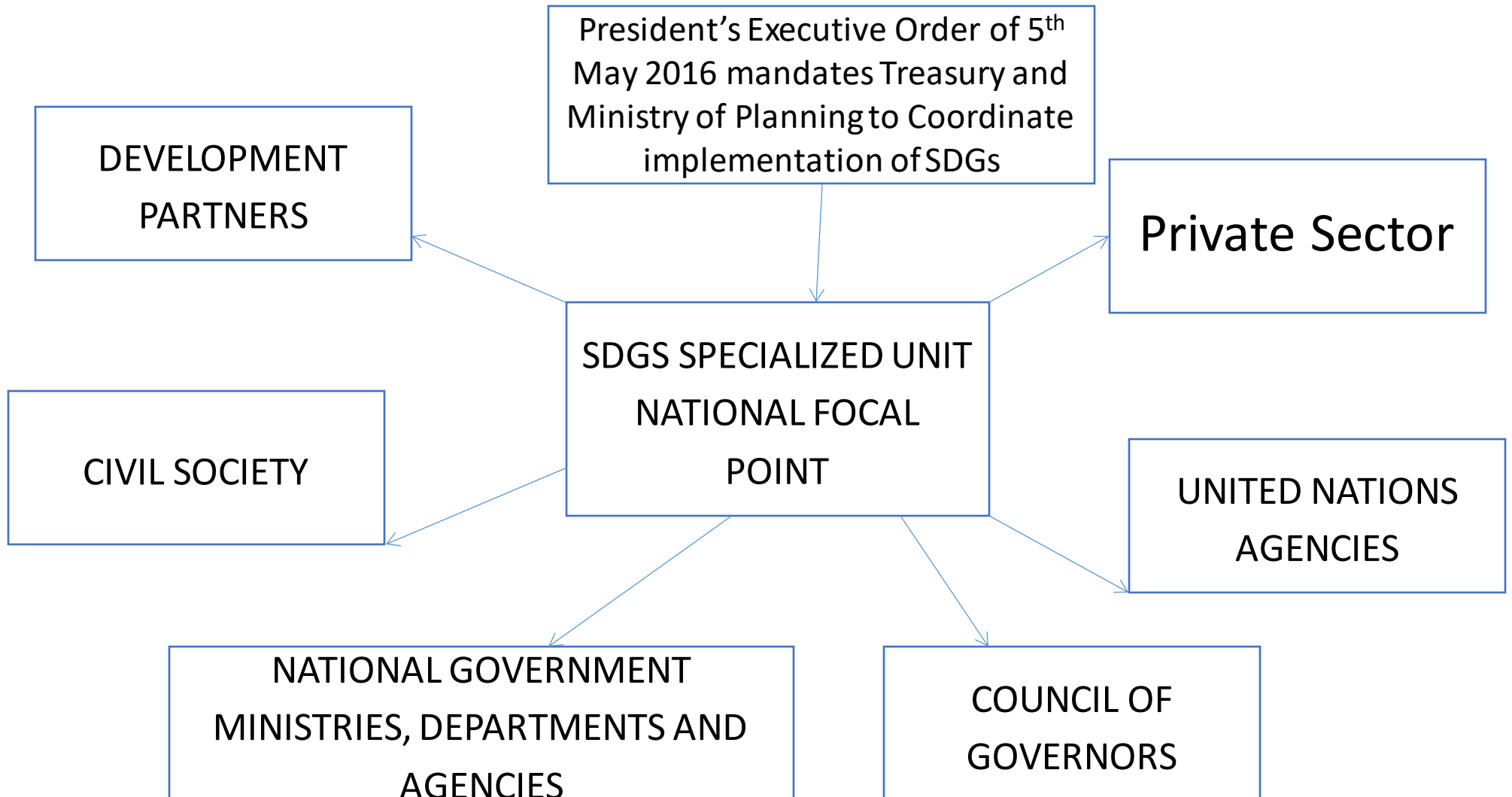
Kenya has in place a robust legislative framework that supports Monitoring and Evaluation and this includes:

- The constitution 2010.
- Public Finance Management Act 2012.
- County Governments Act 2012.
- Intergovernmental Relations Act 2012.
- National M&E Policy.

The constitution requires County Governments to plan and budget for the delivery of goods and services under their mandate.



SDGs institutional framework in Kenya



County plans

The following plans guide planning, budgeting, implementation and M&E within the County:

- County Integrated Development Plan (CIDP).
- County Sectoral Plans.
- County Performance Management Plans.
- County Spatial Plan.
- Annual Development Plan (ADP).
- Cities and urban area plans.

All these plans have mainstreamed SDGs.

The plans are interrelated as they deal with different aspects of County development.



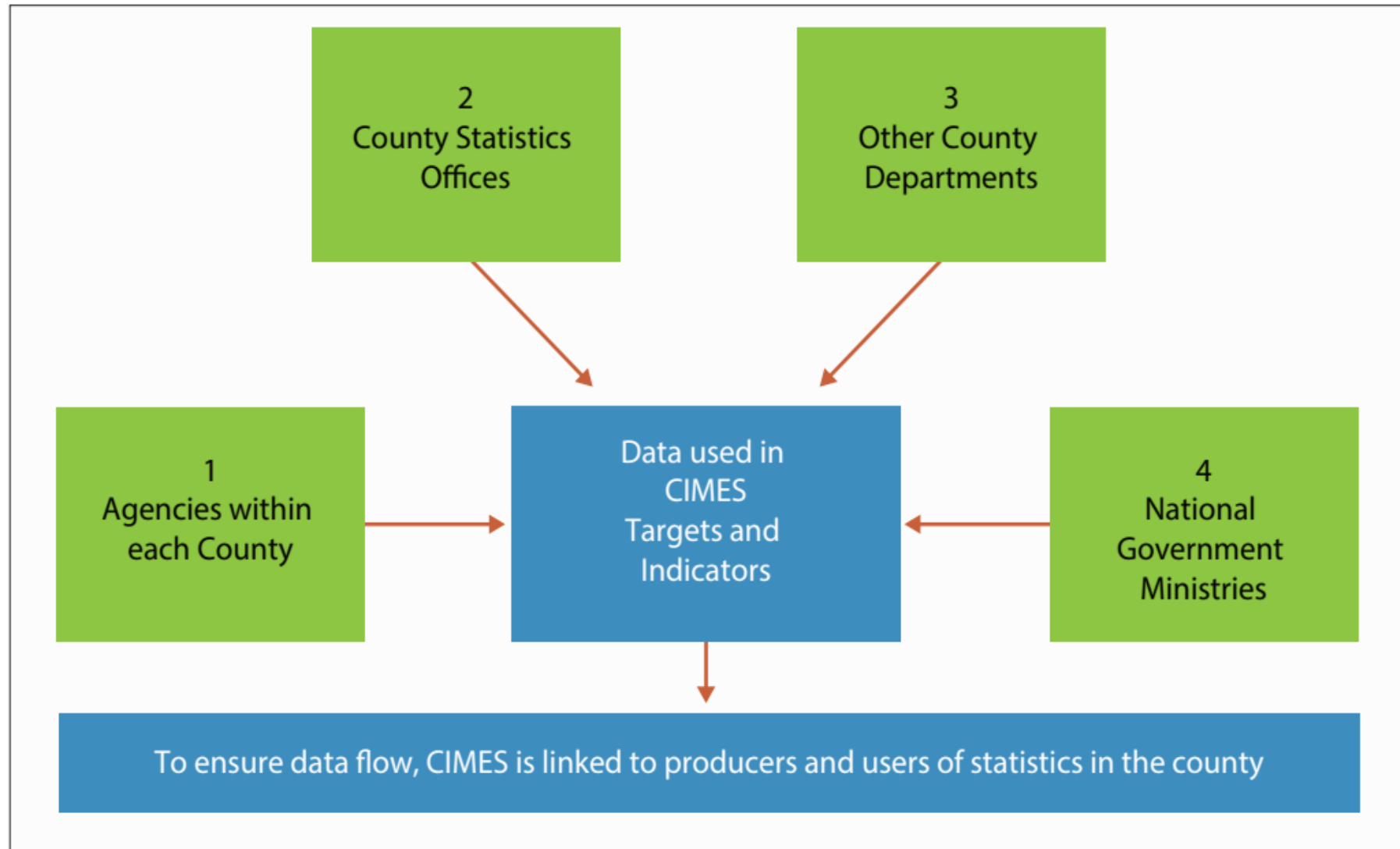
Guidelines for mainstreaming and localizing SDGs

- Guidelines for the preparation of county integrated development plan (CIDP);
- County performance contracting guidelines;
- **Guidelines for the development of county integrated monitoring and evaluation system (CIMES);**
- Guidelines for urban and spatial planning;
- Guidelines for staff performance appraisals;
- Guidelines for public participation.

CIMES guidelines developed to assist county government staff to set-up, design, implement and sustain a functional M&E system that tracks County development.



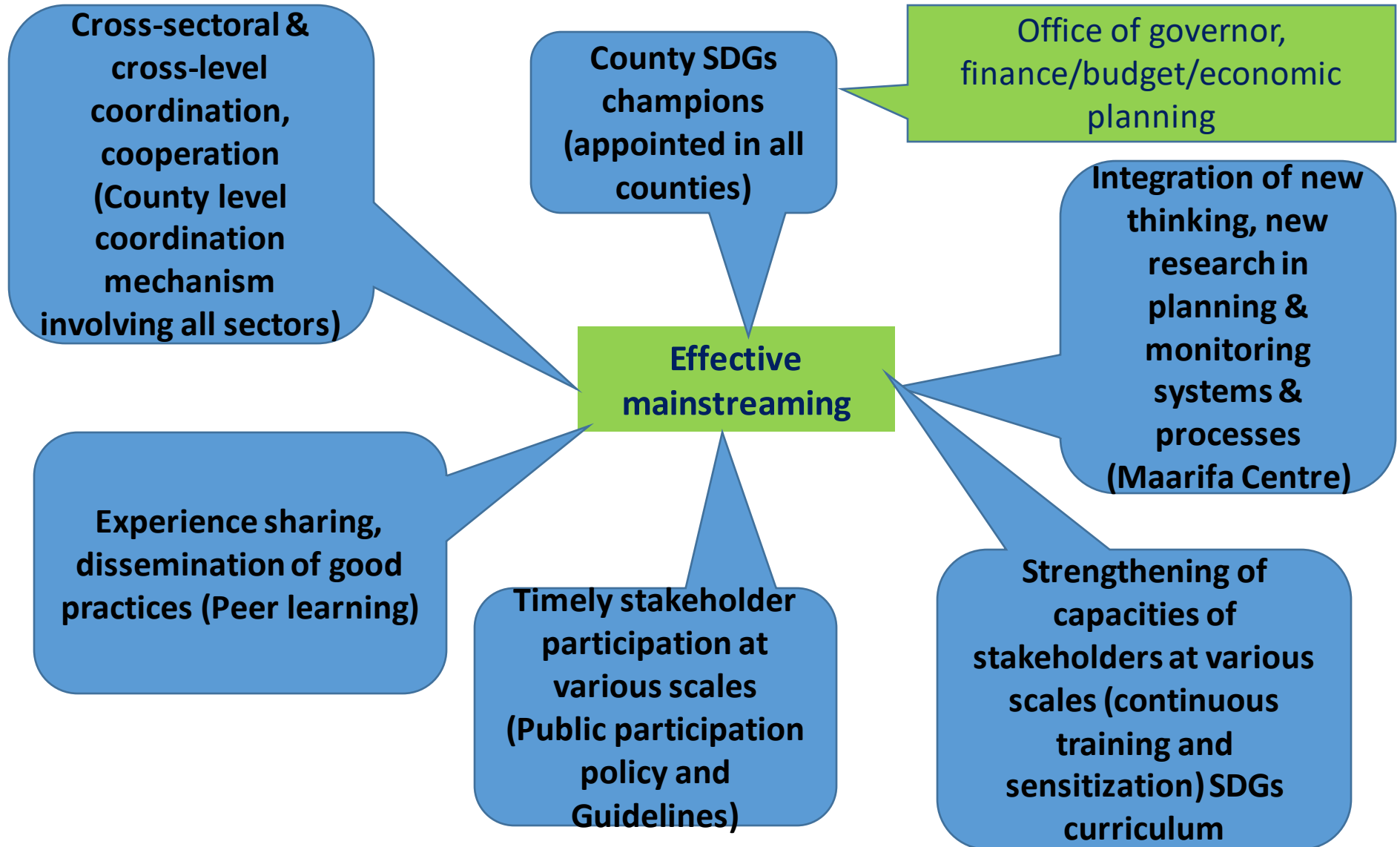
Data Sources for CIMES



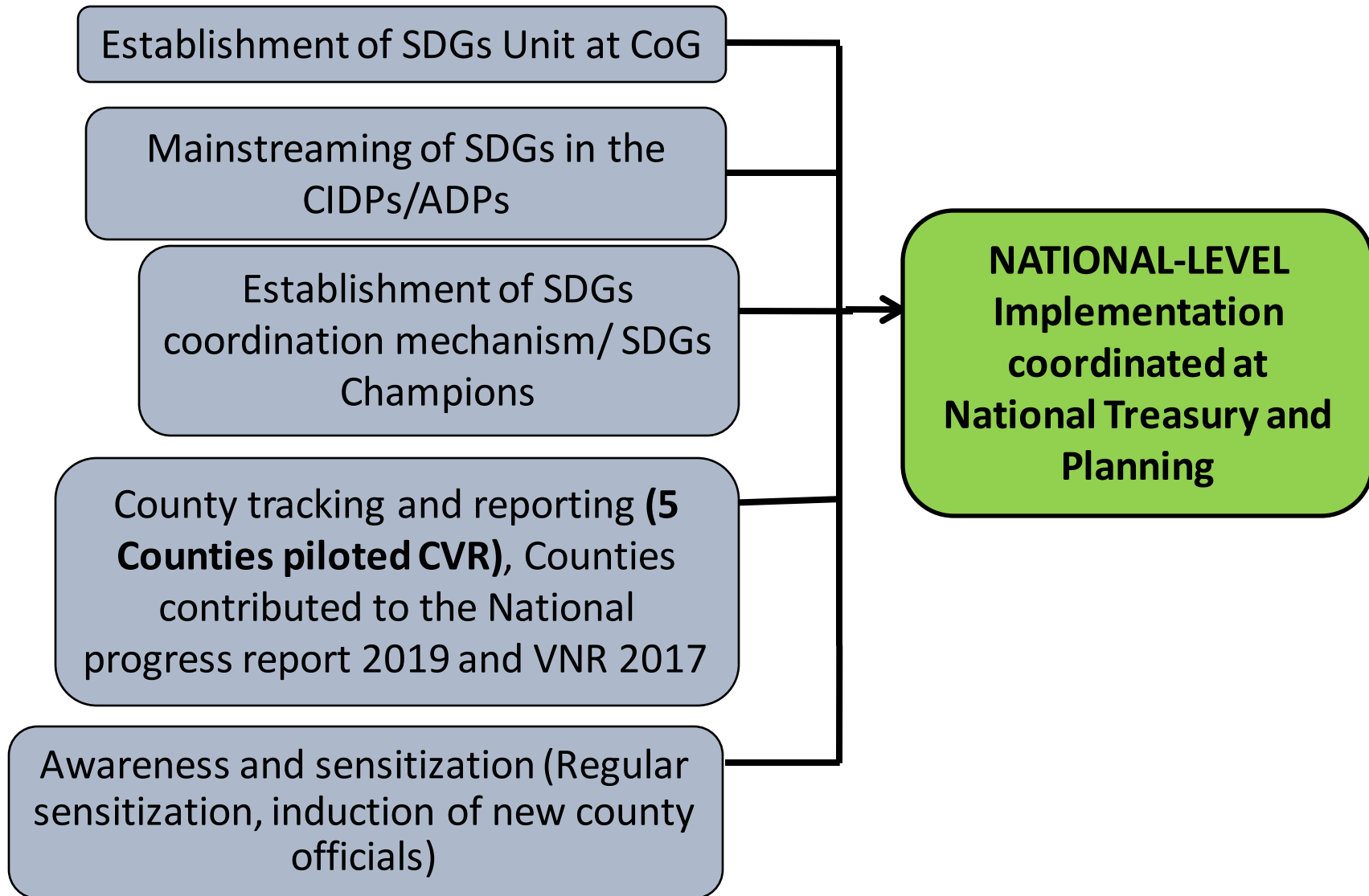
Strengthening M&E at the Counties

- Development of M&E policies.
- Strengthening and operationalization of the County M&E structures (TOC, Intergovernmental forums, COMEC, SCOMECE, Wards MEC, Village MEC, Citizens forum).
- Development of County SDGs indicator handbooks.
- Development of standards and norms for administrative data and Citizens generated data.
- Annual M&E week for all stakeholders for experience sharing and learning.
- Quality control and technical support by Monitoring and Evaluation Department and KNBS.

Framework for effective SDGs mainstreaming in County Governments



Key milestones in SDGs implementation



Challenges and Way forward

CHALLENGE	WAY FORWARD
1. Slow operationalization of the M&E system by some Sub-national governments	<ul style="list-style-type: none">• Peer to peer learning• Continuous training and sensitization
2. Poor data management capacity	<ul style="list-style-type: none">• Strengthening County Statistics offices• Development of template for data collection• Development of norms and standards for citizens generated data
3. Political transitions in Counties and changing priorities	<ul style="list-style-type: none">• Assumption of new office Act 2019



**LEAVING NO
ONE BEHIND:
EVALUATION
for 2030**

2019 National Evaluation
Capacities Conference

Thank You

 @undp_evaluation

#NECdev