

*The role of ICTs in  
generating new data  
for evaluations*

Independent Office  
of Evaluation



Investing in rural people

**Chitra Deshpande,  
Senior Evaluation Officer**

# What is New Data

- **Primary data generated from new and existing sources**
- **Existing data mined and analyzed to generate new knowledge for better insights**

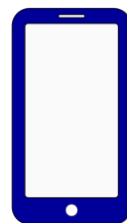
# Driver of new data - ICTs



Wireless



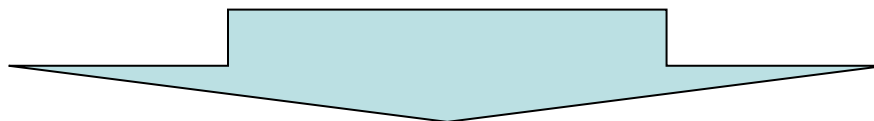
Remote sensing



Mobile collection



Artificial intelligence & machine learning



- Makes real-time data accessible
- Allows access to larger and more reliable data sets that can be analysed faster
- Shortens learning loops making evaluation more efficient and effective

# ICT4Eval - Collective experience along the knowledge value chain



Collection

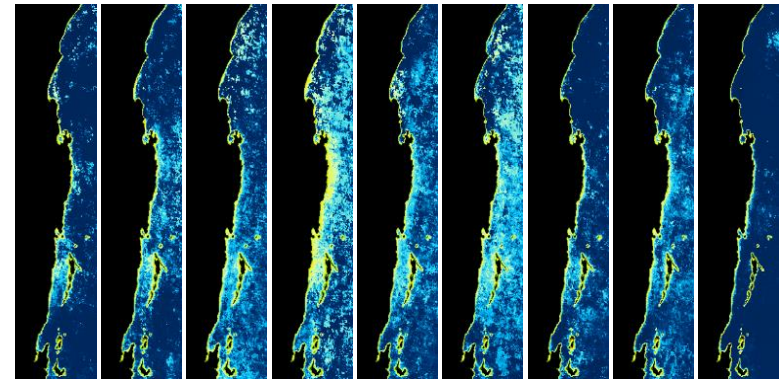
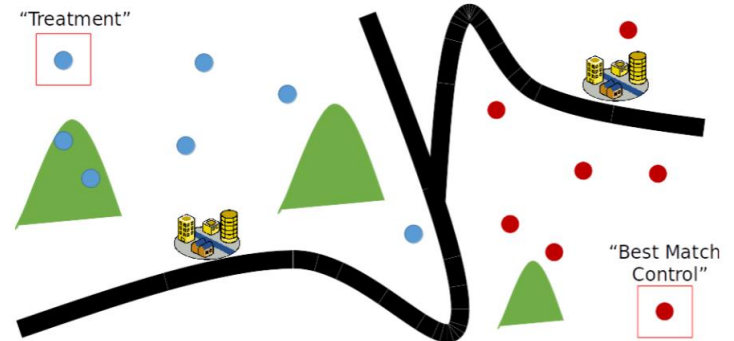
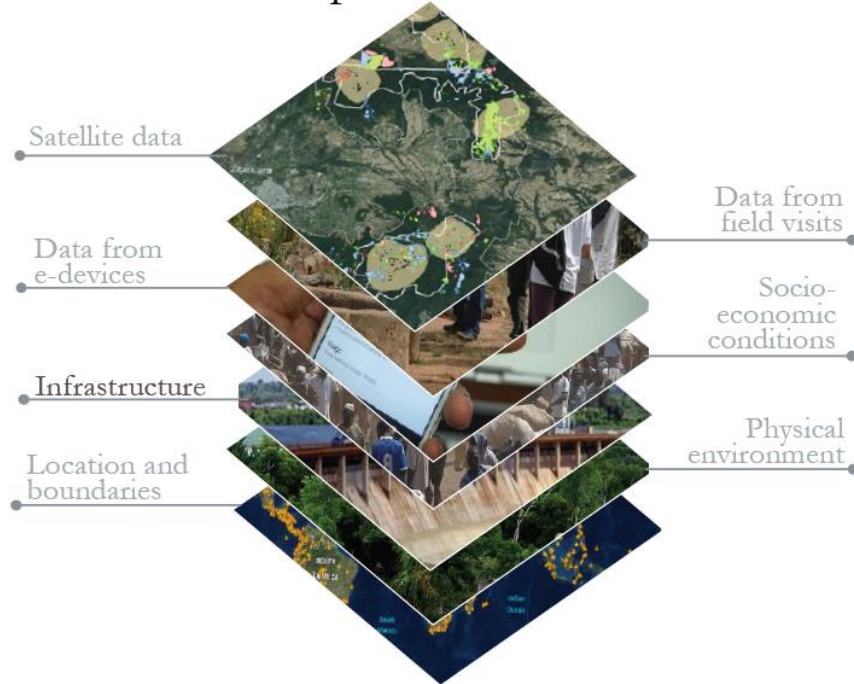
Analysis

Dissemination



# Collection: Using Geospatial analysis for impact evaluations

## Spatial Model



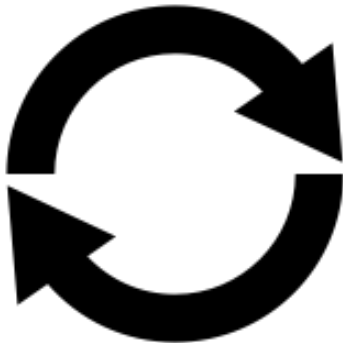
# Analysis: Text mining and Machine learning improve systematic reviews and evidence gap maps



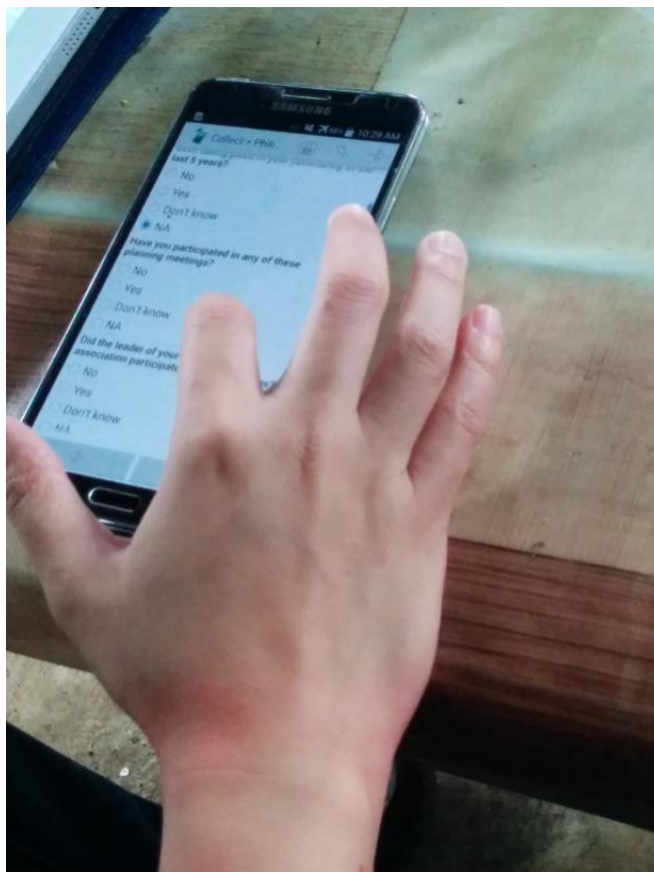
Normally evidence and gap maps takes 1 month and systematic reviews 12-24 months.

## Machine learning process:

- Researchers make first screening
- Machines suggest studies with high probability of inclusion
- Researchers make further screening
- Machines further refine the probabilities
- And so on..



# Dissemination: Enabling community participation and validation of digitally collected data through real-time feedback



# Lessons learnt and reflections for the future





Behind every data point is a human story

